



2024 ANNUAL REPORT

JANUARY 1 – DECEMBER 31



**SUPPORT FOR FAMILIES
OF CHILDREN WITH DISABILITIES**
EDUCATION • EMPOWERMENT • EQUITY

832 FOLSOM STREET, SUITE 1001

SAN FRANCISCO, CA 94107

(415) 282-7494

INFORMATION & INTAKE LINE: (415) 920-5040

INFO@SUPPORTFORFAMILIES.ORG

Table Of Contents

About Support for Families

3

From our Director

4

Impact

5

Program Highlights

6

Financial Report

7

Board and Staff

8





About Support for Families

Empowering Families

Our Family Resource Center provides a wide range of services to support families and professionals. We offer an Information and Intake Line staffed by team members fluent in English, Spanish, Cantonese, and Mandarin; a free resource library with books; and disability information packets available in English, Spanish, and Chinese. We host educational events for caregivers and professionals with free interpretation, as well as support groups, a Parent Mentor Program, and navigation support services. Families can participate in Triple P parenting workshops, attend family festivals, and receive basic needs assistance such as diapers and food. We also partner with the Baseball Academy to offer engaging and fun baseball clinics for school-aged children and teens, and collaborate with San Francisco museums to provide exciting field trip days. Our outreach is supported by a monthly newsletter, website, social media, our annual Information & Resource Conference, and the Access to Adventure inclusive recreation showcase.

Promoting Inclusion and Early Identification of Needs

Support For Families is the Centralized Access Point (CAP) in the new San Francisco Early Connections system—serving as the first step in helping families access early intervention and inclusive supports. Our CAP team works closely with families to understand their needs and connect them to the right services, whether they are just beginning their journey or already know what support they're looking for.

As part of this work, we facilitate developmental screening and referrals for young children across the city. Through this process, families are guided to appropriate resources based on their child's individual needs, including specialized services, evaluations, and ongoing supports. Our Early Connections Care Coordinators help families navigate complex systems, streamline access to services, and ensure that no one falls through the cracks.

In addition to individualized care coordination, Support for Families partners with agencies throughout San Francisco to offer Developmental Playgroups. These groups are inclusive, play-based environments that foster growth and connection while supporting developmental goals. These playgroups also offer a chance for ongoing observation and parent education.

We are also the Early Intervention Family Resource Center (EI FRC) for San Francisco, serving families with children who have or are at risk for developmental disabilities, delays, or complex medical needs. We provide a wide range of services for families with children ages 0 to 17 who are receiving early intervention, have special health care needs, or are just starting to explore concerns about their child's development.

Strengthening Systems for Children with Special Health Care Needs

Family Voices of California (FVCA) is a Family-to-Family Health Information Center of the U.S. Maternal Child Health Bureau. This coalition of California parent centers works to improve policies and systems of care for children with special health care needs. Support for Families coordinates FVCA's annual Health Summit and Legislative Day and also trains our next generation of parent advocates through the Family Voices Project Leadership Course.

Core Programs

- **San Francisco Population-Based Family Resource Center for Special Needs (FRC)**, Division for Early Childhood; Department of Children, Youth and their Families; SF Human Service Agency
- **Community Parent Resource Center (CPRC)**, US Department of Education
- **Parent Training and Information Center (PTI)**, as part of the Northern California Region 4 Collaborative, US Department of Education
- **Family Empowerment Center on Disability (FEC)**, California Department of Education
- **Family-to-Family Health Information Center (F2F)**, Family Voices of California



Our Mission

The purpose of Support for Families is to ensure that families of children with any kind of disability or special health care need, and the providers who serve them, have the knowledge and support to make informed choices that enhance children's development and well-being.

We promote partnership with families, professionals and the community at large, because it is through partnership that we create a community where our children can flourish.

From our Director

Support for Families is navigating an exciting time of growth, even as we encounter an increasingly volatile external landscape of government changes impacting funding and services in healthcare, education, social services, and other critical programs. In 2024 we launched several significant new programs designed to help families of children with disabilities and complex medical needs better learn about and access services. We were honored to be formally designated by the City of San Francisco's Department of Early Childhood through a competitive application process as the new Centralized Access Point for Children and Youth with Disabilities and Special Healthcare Needs. Along with our longstanding work as a Family Resource Center, we now provide expanded support around a new citywide Early Connections System to support development of children ages 0-5.

We also expanded our work as a Community Parent Resource Center, launching a new Youth Leadership Council and expanding our supports for teens/young adults with disabilities and their families. This dovetailed with our efforts in SF Kids Collaborative where we created a dynamic new Transition to Adult Services Planning Tool, as well as an Early Start Map and a Top 20 Resources for Families of Children with Complex Medical Needs. Of course, we continued to have a lot of fun and inclusive events including new baseball clinics with SF Baseball Academy; family festivals at Southeast Community Center (Bayview), Yerba Buena Gardens (SOMA), and Golden Gate Park (Sunset); the Information and Resource Conference—this year at Balboa High School in the Excelsior—and our longstanding holiday Ice Skating party.

Despite our exciting growth, it is a complex challenge as federal, state, and local changes threaten our funding and the essential services that ensure children with disabilities and complex medical needs can live and thrive in their communities. Whatever may come, We will continue to empower families and steadfastly advocate for children.

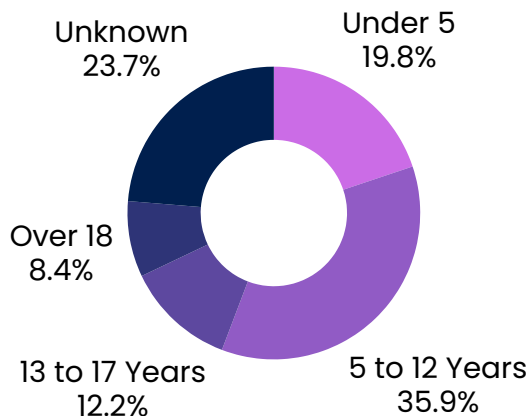
These are challenging times and whatever comes next, we need your partnership, advocacy, and financial support more than ever. Thank you for your unwavering dedication to our mission. We move forward together!

In community,

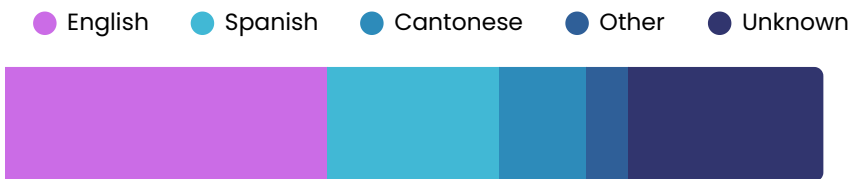
Wendy Neikirk Rhodes, Executive Director

Impact

Our Families by Age of Child



Our Families by Primary Language



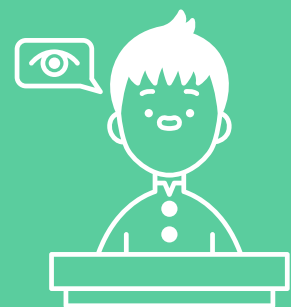
How families felt after workshops & events



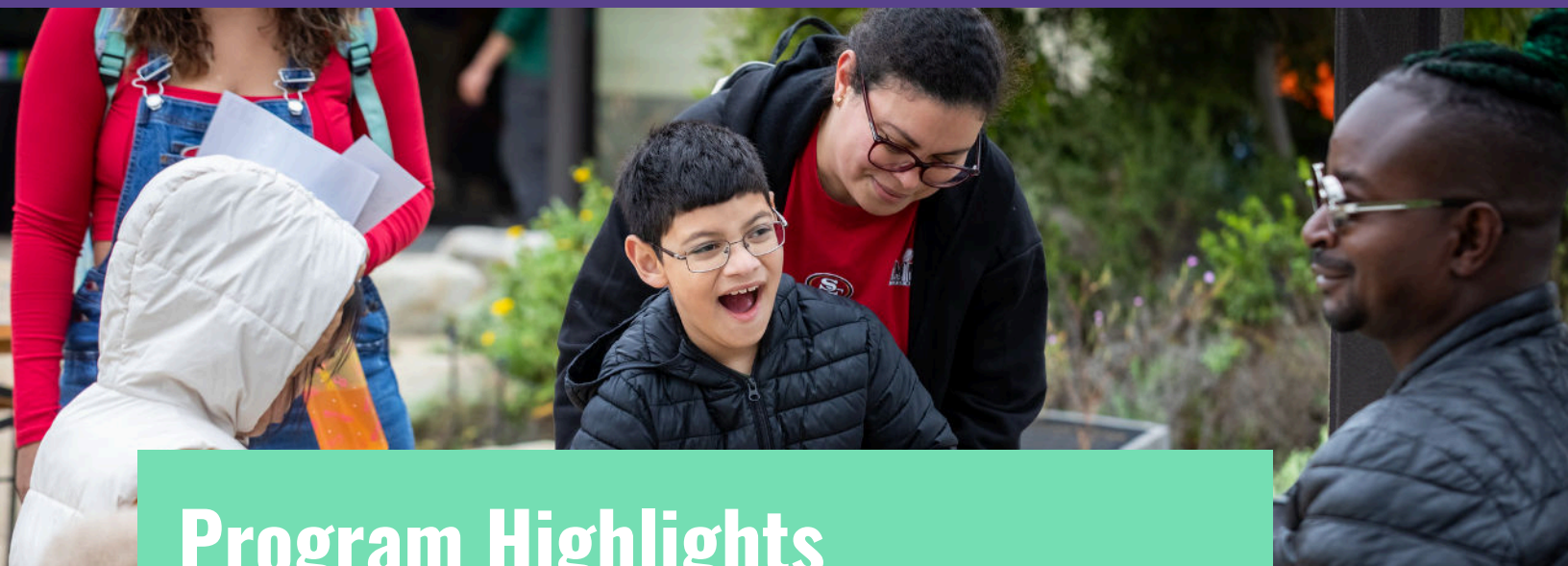
95.2% "increased their feelings of support."



95% "increased their knowledge of their child's needs and/or resources."



95.2% "provided them with strategies to advocate effectively for their child."



Program Highlights

Education

This year we delivered 189 critical workshops on topics like "Navigating GGRC Services", "Introduction to Assistive Technology", "Let's Brush and Floss", "Inclusion in San Francisco" and "Skills for Effective Parent Advocacy". We taught 60 parenting skills sessions, and led 27 small group IEP clinics, such as "IEP Bootcamp" and "Back to School IEP Essentials", to inform and empower families as they support their children.

Empowerment

We empower families to learn about and advocate for services by providing helpful education, resources, and individualized consultations and navigation assistance. We provide life-changing family support for: special education needs including IEP/504; DDS/Regional Center services; IHSS; Medi-Cal; complex medical needs, and so much more. We also provide peer to peer mentorship and support where families and individuals with disabilities can build community and share resources, and specialized knowledge.

Equity

With outreach across San Francisco, we especially focused our efforts on neighborhoods and communities where families have been historically underserved and experience disparities in services. Our vision is that all families have equal access to information about services for their child and are able to receive those services efficiently and effectively.

Hi!

嗨

Hola!

14

NUMBER OF
LANGUAGES IN WHICH
HELP WAS PROVIDED

ATTENDANCE
AT EVENTS AND
WORKSHOPS

6,213

FAMILIES & PROVIDERS
RECEIVING
1:1 SUPPORT

1,686

20,996

INTERACTIONS WITH
FAMILIES AND PROVIDERS

154

PARENT SUPPORT & TRAINING
MEETINGS SHARING EMPATHY
WITH PARENTS WHO "GET IT"

45

FUN AND INCLUSIVE
FAMILY EVENTS

Information & Resource Conference

Our flagship annual conference is packed full of informational workshops, resources, and exhibitors to help individuals with disabilities and their families learn about services and support. Presented in partnership with SFUSD, every student with an IEP or 504 receives a personal invitation, and all families are welcome. In 2024 we welcomed over 400 attendees!

Access to Adventure

Presented in partnership with San Francisco Rec & Park, and Partnership for the Presidio, this annual showcase of local inclusive recreation opportunities helps us connect our families with each other and to FUN inclusive activities across the city! In 2024 we had over 270 attendees!

Financial Summary



January 1—December 31, 2024

INCOME

| | |
|-------------------------|----------------|
| Grants & Contributions | 3,786,875.00 |
| Fundraising events, net | 154,174.000 |
| Investment return, net | 2,185.00 |
| Other income | 20,864.00 |
| Total | \$3,964,098.00 |

EXPENSES

| | |
|----------------------|----------------|
| Program Service | 3,124,521.00 |
| Fundraising | 108,630.00 |
| Management & General | 678,860.00 |
| Total Expenses* | \$3,912,011.00 |



*Complete audited financial statements are available at the Support for Families office.



All services and events are always free of charge to encourage participation by all families. With the demand for services greater than ever, your donations help make this possible. A gift to Support for Families means that families of children with special needs will be better prepared to help their children and that more children with disabilities will live their lives with dignity and opportunity.

Board and Staff

Board of Directors

Amelia Eddleman, President
Dave Stringer-Calvert, Treasurer
Lee Filner, Secretary
Sally Coghlan McDonald
Eileen Boussina
Tiffani Castillo-Lartigue
Tiffany Lin
Betsy de la Garza
Lisa Lam
Marcia Sims

Executive Director
Wendy Neikirk Rhodes

Staff

Sarai Baca, Martha Barrera, Sloan Baysinger, Sarah Bennett, Melissa Cirilo, Karen Bohall-Ortega, Melanie Boulfield-Romero, Ryan Bruno, Runzhi Cai, Celeste Chacon, Josephine Cheung, Dora J., Roynea Epps, Liliana Estrella, Megan Geary, Mariah Kuan, Janis Lambert, Myrna Little, Dennis Lockett, Jr., Roxana Lopez, Sean Lowry, Olga Maldonado, Marisol Martinez, Emilia Melara, Wendy Neikirk Rhodes, Trang Nguyen, Kristina O'Brien, Katty Perea Zevallos, Kayla Redmon, Wendy Reyes Orellana, Joyce Ruan, Laura Saravia-Algathab, Bonnie Sarchet, Christina Share, Desiree Sheehan, Linda Tung, Flavia Valdes

Board and Staff lists are as of Dec. 31, 2024

